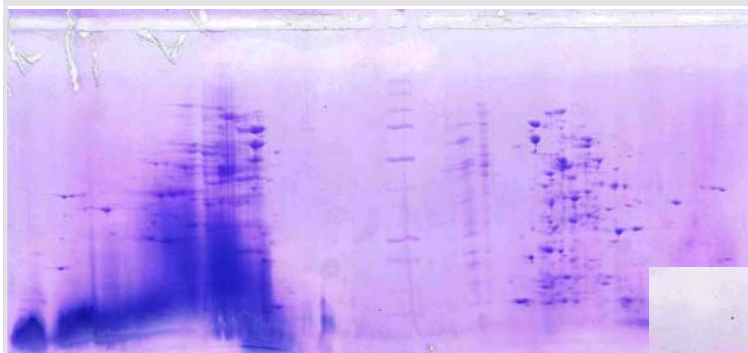


# INSTRUCTION: IPG-AMPHOLYTE MIX 1004-15

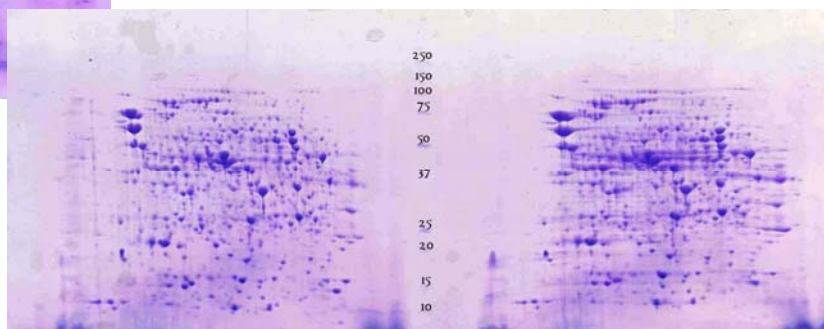


07/08



Dark background with conventional IPG buffers or other carrier ampholytes

No background with IPG-Ampholyte-Mix in the sample and the IPG strip



The IPG-Ampholyte-mix is a special Carrier Ampholytes cocktail for rehydration of IPG-strips providing highest resolution in the first dimension of 2-D electrophoresis. This product is used as a replacement for IPG buffers or other carrier ampholytes in the sample lysis solution and the rehydration solution for IPG strips. Because the buffer components of the IPG-Ampholyte-mix possess smaller molecular sizes than conventional products, the 2nd dimension SDS gels show no background upon Coomassie, silver, or fluorescence staining. IPG-Ampholyte-mix contains carrier ampholytes pH 3-10 and can be used for IPG strips with the following pH gradients: 3-10, 4-7, 5-8.

Content of one bottle: 20 mL (40% w/v)

## Sample preparation

Standard solubilization cocktail "lysis solution, lysis buffer" (10 mL)

9 mol/L urea	5.4 g
4 % (w/v) CHAPS	400 mg
1 % (w/v) DTT (= 65 mmol/L)	100 mg
2% (v/v) IPG-Ampholyte-Mix	200 µL
0.002 % Bromophenol blue*)	10 µL
Water, deionized, make up to	10 mL

\*) from 1 % BPB blue solution

Solubilization cocktail for very hydrophobic proteins "lysis solution, lysis buffer" (10 mL)

7 mol/L urea	4.2 g
2 mol/L thiourea	1.5 g
4 % (w/v) CHAPS	400 mg
1 % (w/v) DTT (= 65 mmol/L)	100 mg
2% (v/v) IPG-Ampholyte-mix	200 µL
0.002 % Bromophenol blue*)	10 µL
Water, deionized, make up to	10 mL

\*) from 1 % BPB blue solution

## Rehydration of IPG strips

### Standard rehydration solution

7 mol/L urea	4.2 g	
2 mol/ thiourea	1.5 g	
0.5 % (w/v) CHAPS	50 mg	
0.28 % (w/v) DTT	28 mg	
10 % (v/v) glycerol	1.2 mL	
1.25 % (v/v) IPG-Ampholyte-Mix	125 µL	
0.002 % Bromophenol blue**)	10 µL	*) from 1 % BPB blue solution
Water, deionized, make up to	10 mL	

### Rehydration solution for improved separation of basic proteins

7 mol/L urea	4.2 g	
2 mol/ thiourea	1.5 g	
0.5 % (w/v) CHAPS	50 mg	
100 mmol/L DeStreak	120 µL	Hydroxyethylthiolsulfide (HED)
10 % (v/v) glycerol	1.2 mL	
1.25 % (v/v) IPG-Ampholyte-Mix	125 µL	
0.002 % Bromophenol blue**)	10 µL	*) from 1 % BPB blue solution
Water, deionized, make up to	10 mL	